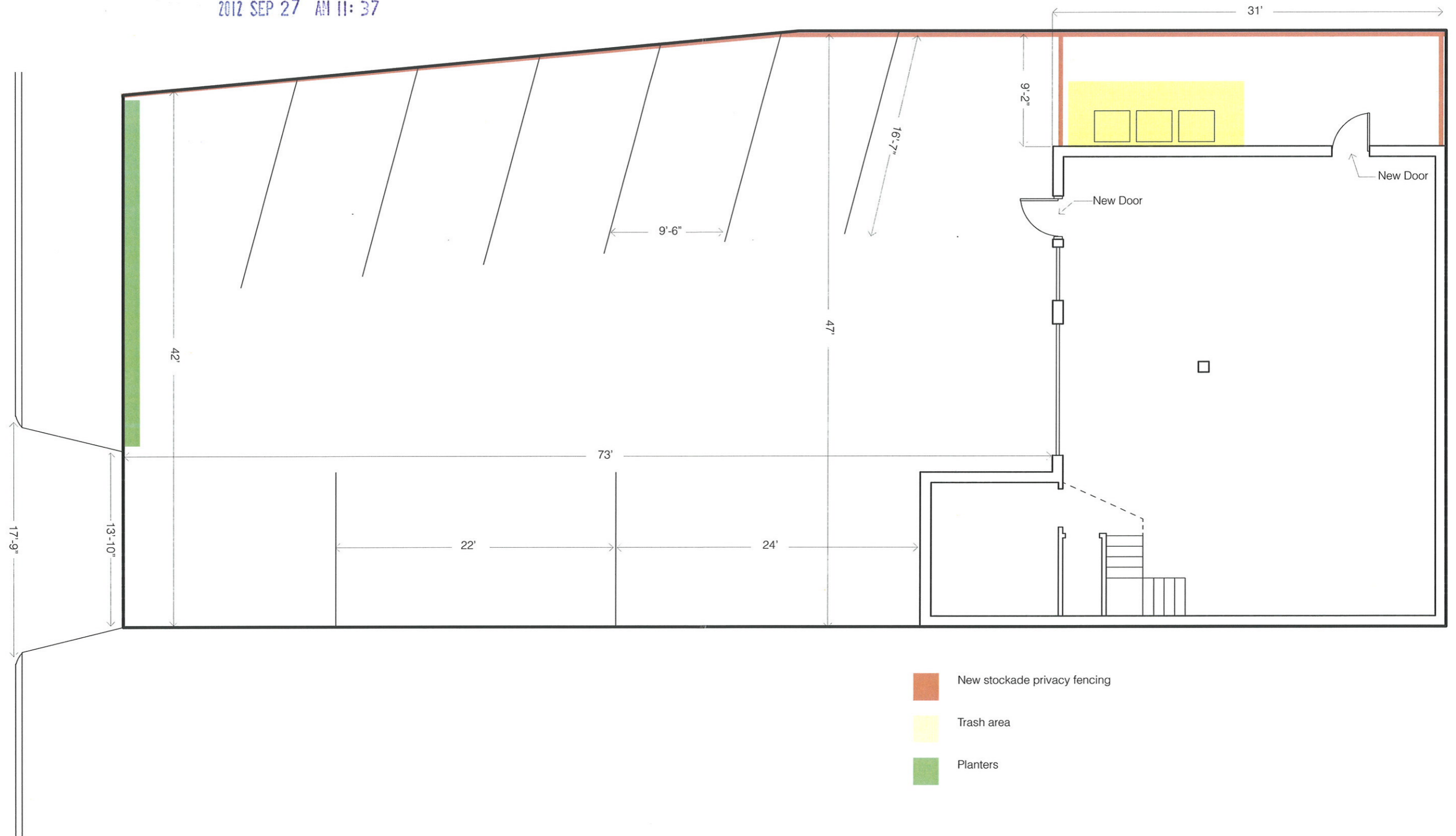


RECEIVED
S.P.C.D. AND
PLANNING DEPT.

2012 SEP 27 AM 11:37

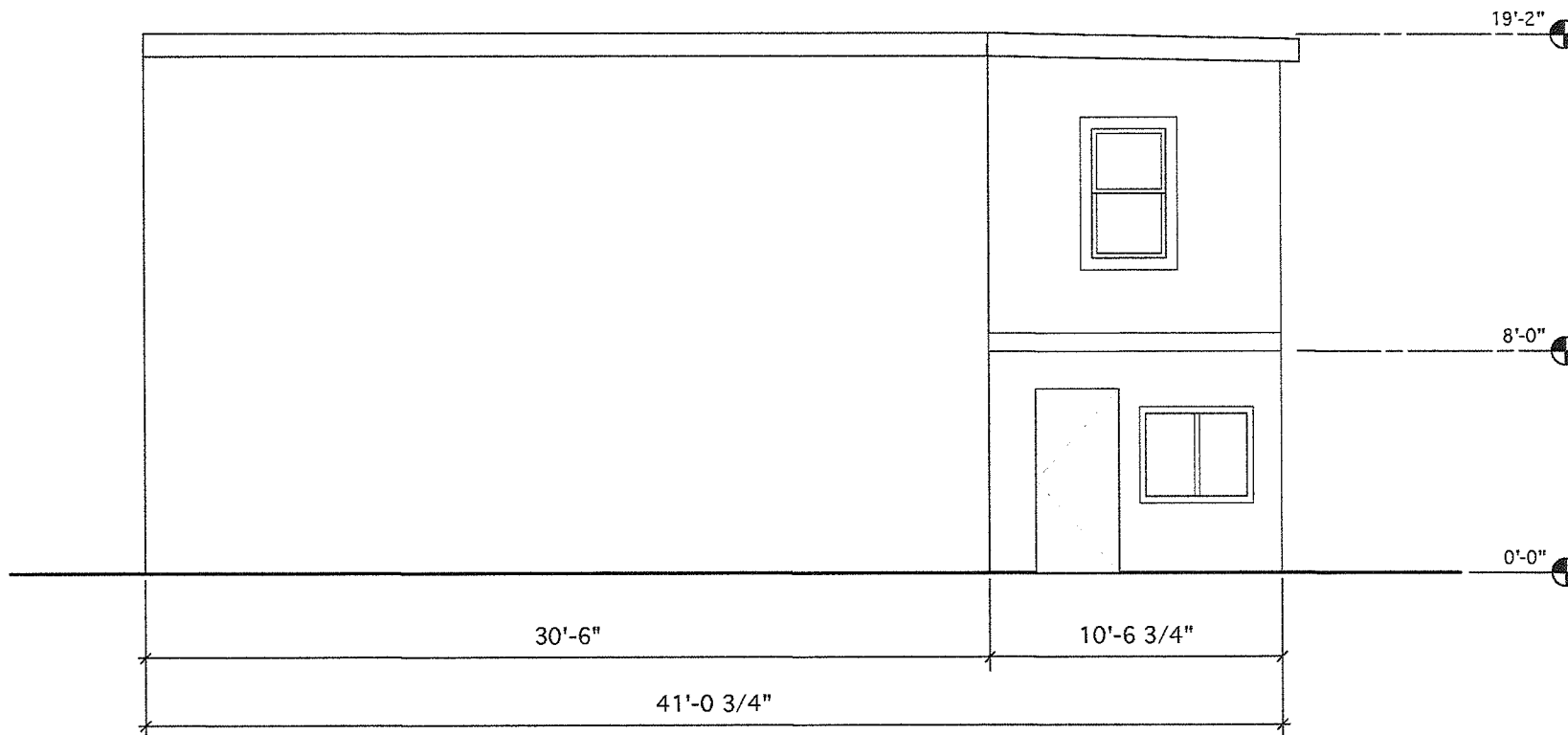


Site Plan - 453 Somerville Ave - Akimenko Meats

Scale: 1/8" = 1'

RECEIVED
S.P.C.D. AND
PLANNING DEPT.

2012 SEP 12 PM 7:09

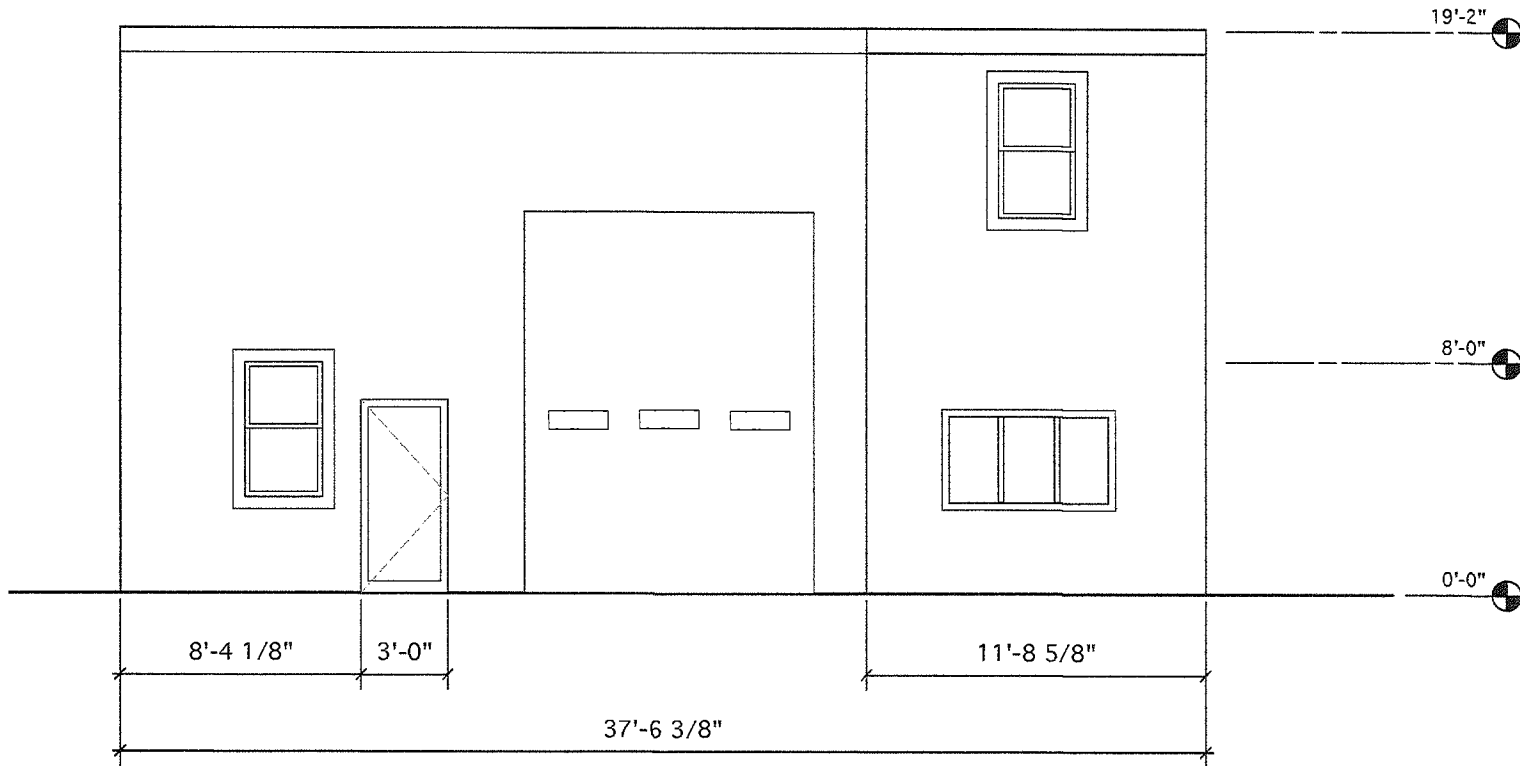


① Existing Side Elevation
1/4"=1'

NOTES/LEGENDS	
For Zoning Review Only	
DESIGNER: PS Design 463a 5th Ave. #3F Brooklyn, NY 11215 718.877.3939	
MECHANICAL ENGINEER	
STRUCTURAL ENGINEER	
PROJECT: AKIMENKO MEATS 453 Somerville Ave. Somerville, MA 02143	
SCALE: VARIES DATE: 08/28/12	
A.102	

RECEIVED
S.P.C.D. AND
PLANNING DEPT.

2012 SEP 12 PM 7:09

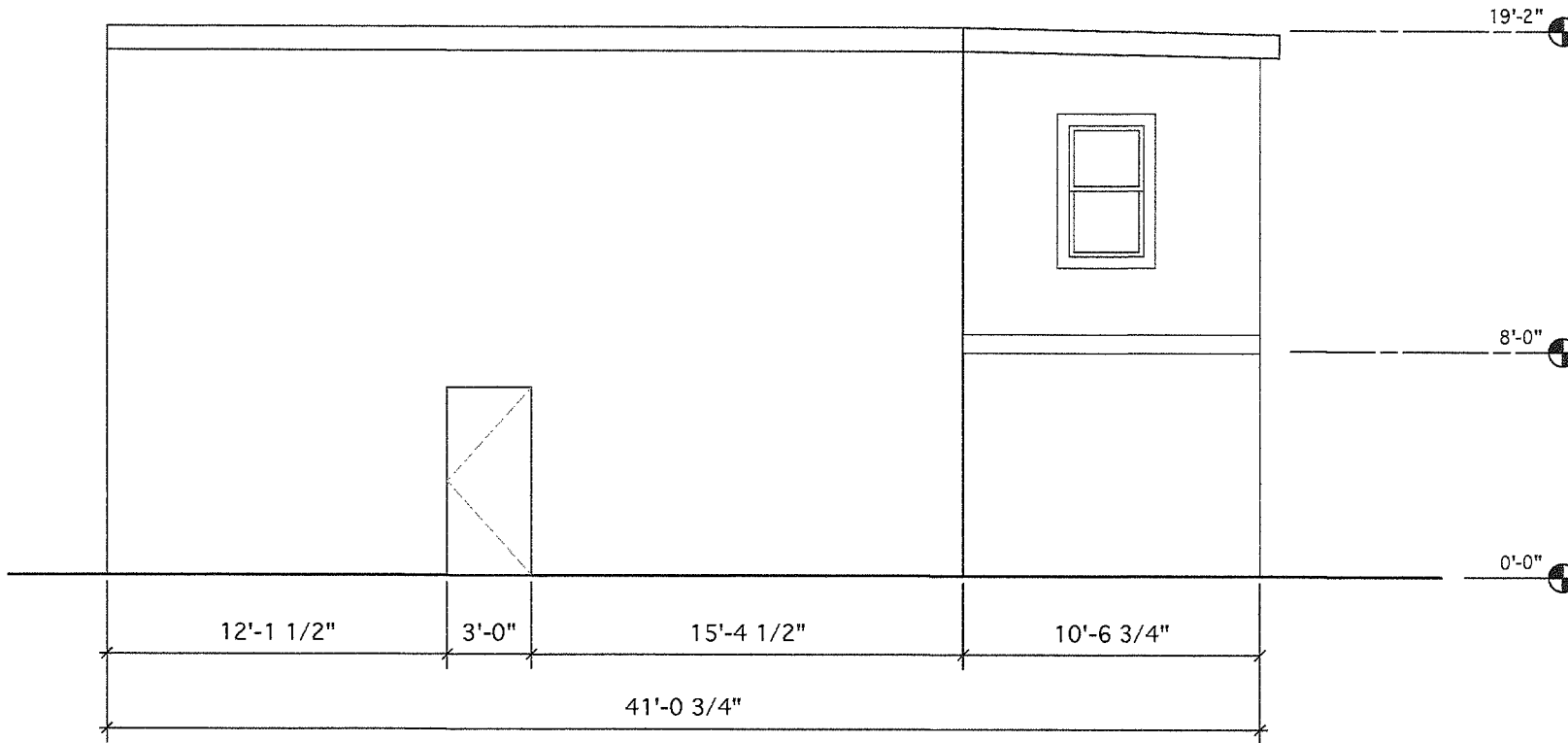


1 Proposed Front Elevation
1/4" = 1'

NOTES/LEGENDS
For Zoning Review Only
DESIGNER PS Design 463a 31st Ave. #5F Brooklyn, NY 11215 718.877.3939
MECHANICAL ENGINEER
STRUCTURAL ENGINEER
PROJECT AKIMENKO MEATS 453 Somerville Ave. Somerville, MA 02143
SCALE: VARIES DATE: 09/28/12
A.104

RECEIVED
S.P.C.D. AND
PLANNING DEPT.

2012 SEP 12 PM 7:09



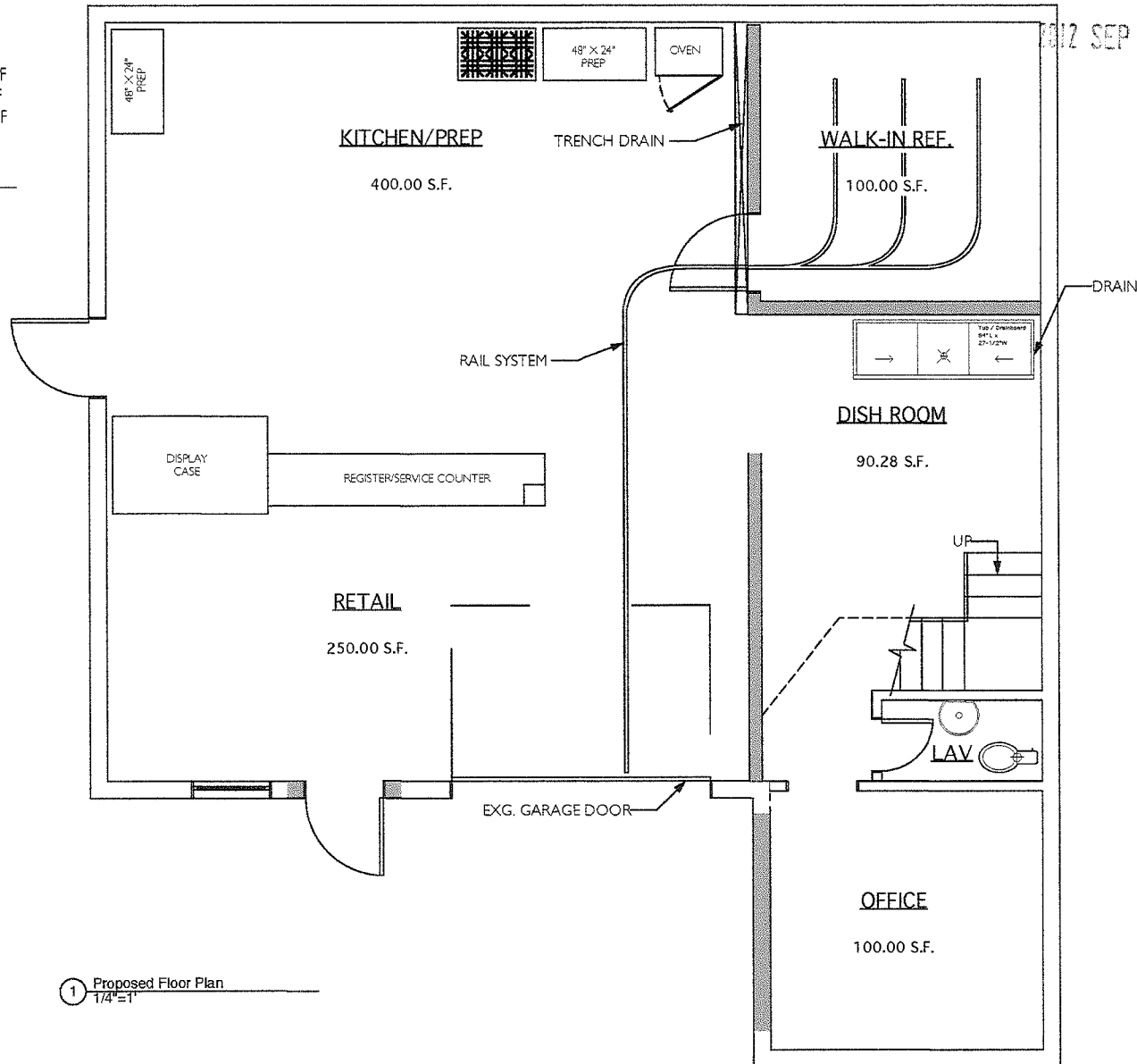
1 Proposed Side Elevation
1/4"=1'

NOTES/LEGENDS
For Zoning Review Only
REVISIONS:
DESIGNER: PS Design 463a 5th Ave. #3F Brooklyn, NY 11215 718.877.3959
MECHANICAL ENGINEER:
STRUCTURAL ENGINEER:
PROJECT: AKIMENKO MEATS 453 Somerville Ave. Somerville, MA 02143
SCALE: VARIES DATE: 09/28/12
A.105

RECEIVED
S.P.C.D. AND
PLANNING DEPT.

012 SEP 12 PM 7:07

SQUARE FOOTAGE
 KITCHEN/PREP: 400 SF
 WALK-IN REF.: 100 SF
 DSIH ROOM: 90.28 SF
 OFFICE: 100 SF
 RETAIL: 250 SF
 TOTAL: 940.28



1 Proposed Floor Plan
1/4"=1'

NOTES/LEGENDS	
For Zoning Review Only	
DESIGNER: PS Design 463a 5th Ave. #3F Brooklyn, NY 11215 718.677.3939	
MECHANICAL ENGINEER:	
STRUCTURAL ENGINEER:	
PROJECT: AKIMENKO MEATS 453 Somerville Ave. Somerville, MA 02143	
SCALE: VARIES DATE: 09/26/12	
A.103	

RECEIVED
S.P.C.D. AND
PLANNING DEPT.

2012 SEP 12 PM 7:10



RECEIVED
S.P.C.D. AND
PLANNING DEPT.

2012 SEP 12 PM 7:10

AKIMENKO MEATS

[space for
public art]

453

135

135

